

PDPO Biodivers groen



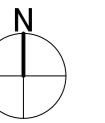
Europees Landbouwfonds
voor Plattelandsontwikkeling:
Europa investeert
in zijn platteland



WAERBEKEHUIS BEPLANTING

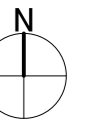


0 10 20 30 40 50 M





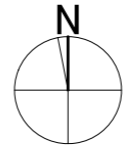
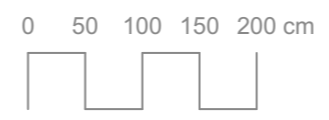
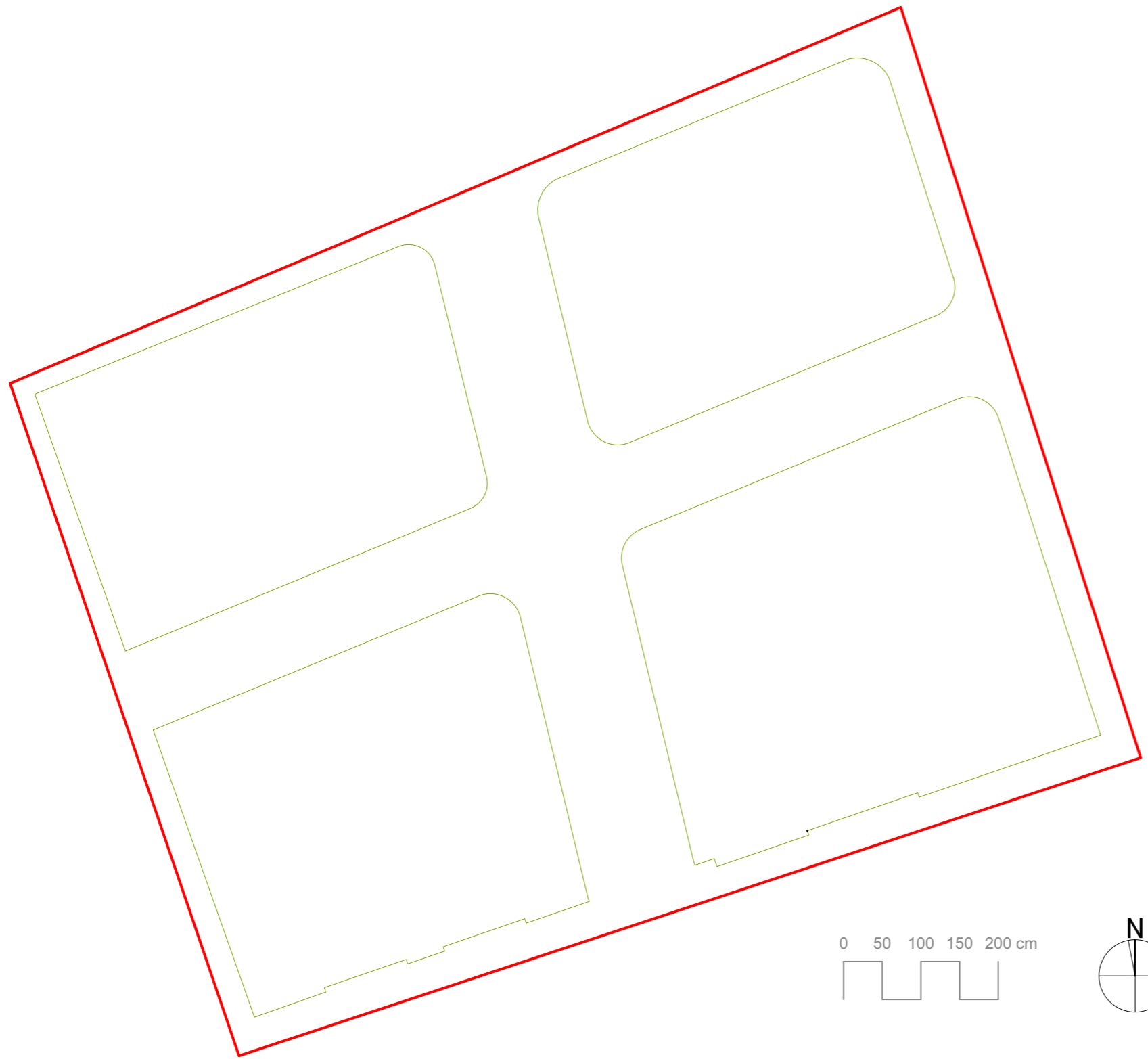
0 10 20 30 40 50 M

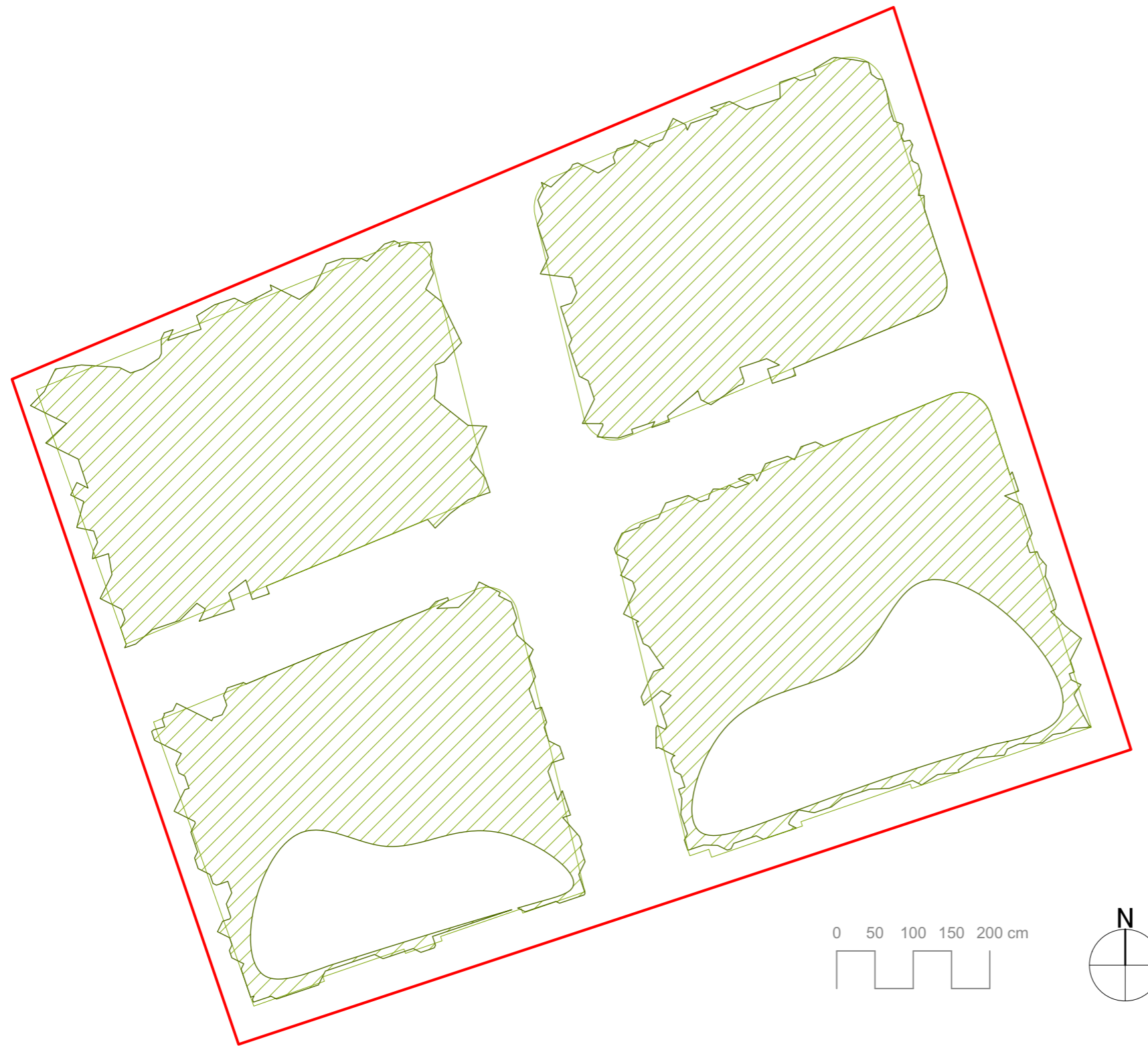




0 10 20 30 40 50 M





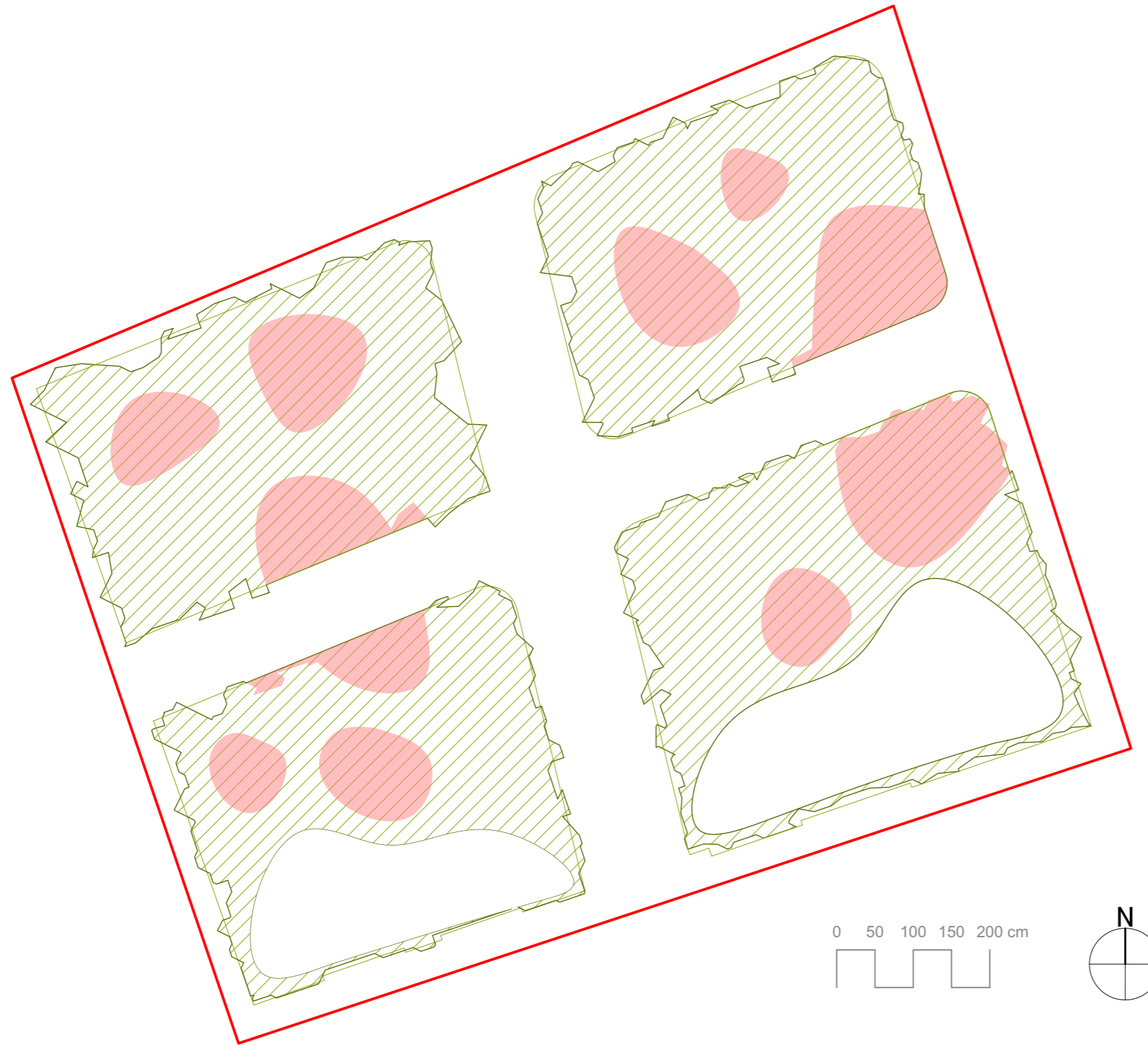


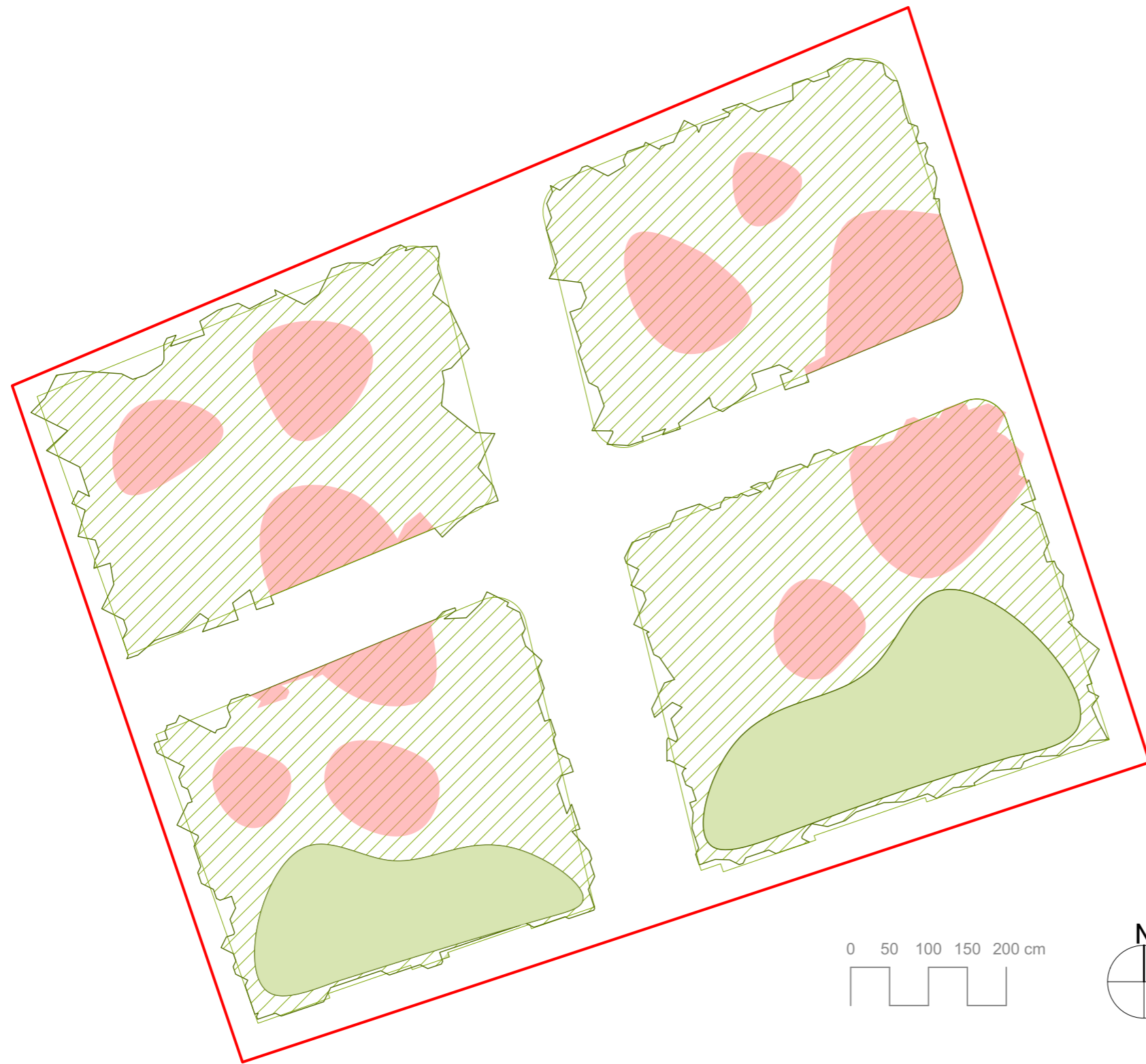
Functionele laag van gemengde kruidige vegetatie tussen 1 en 40 cm hoog

- Achillea millefolium
- Ajuga reptans
- Allium schoenoprasum
- Anthemis tinctoria
- Antirrhinum majus
- Arabis caucasica
- Aster dumosus
- Bellis perennis
- Erodium cicutarium
- Filago germanica
- Herniaria glabra
- Matricaria chamomilla
- Origanum vulgare
- Potentilla anserina
- Prunella vulgaris
- Thymus pulegioides
- Verbena officinalis
- Veronica chamaedrys
- Veronica officinalis
- Viola arvensis
- Viola odorata
- Asplenium ceterac
- Aster alpinus
- Campanula garganica
- Campanula portenschlagiana
- Campanula poscharskyana
- Centranthus ruber
- Cerastium arvense
- Cerastium tomentosum
- Ceterach officinarum
- Corydalis solida
- Cymbalaria muralis
- Dianthus deltoides
- Erigeron karvinskianus
- Geranium sanguineum
- Petrorhagia saxifraga
- Pseudofumaria lutea
- Sedum acre
- Sedum album
- Sedum reflexum

Themalaag van voorjaarsbloeiende bolplanten

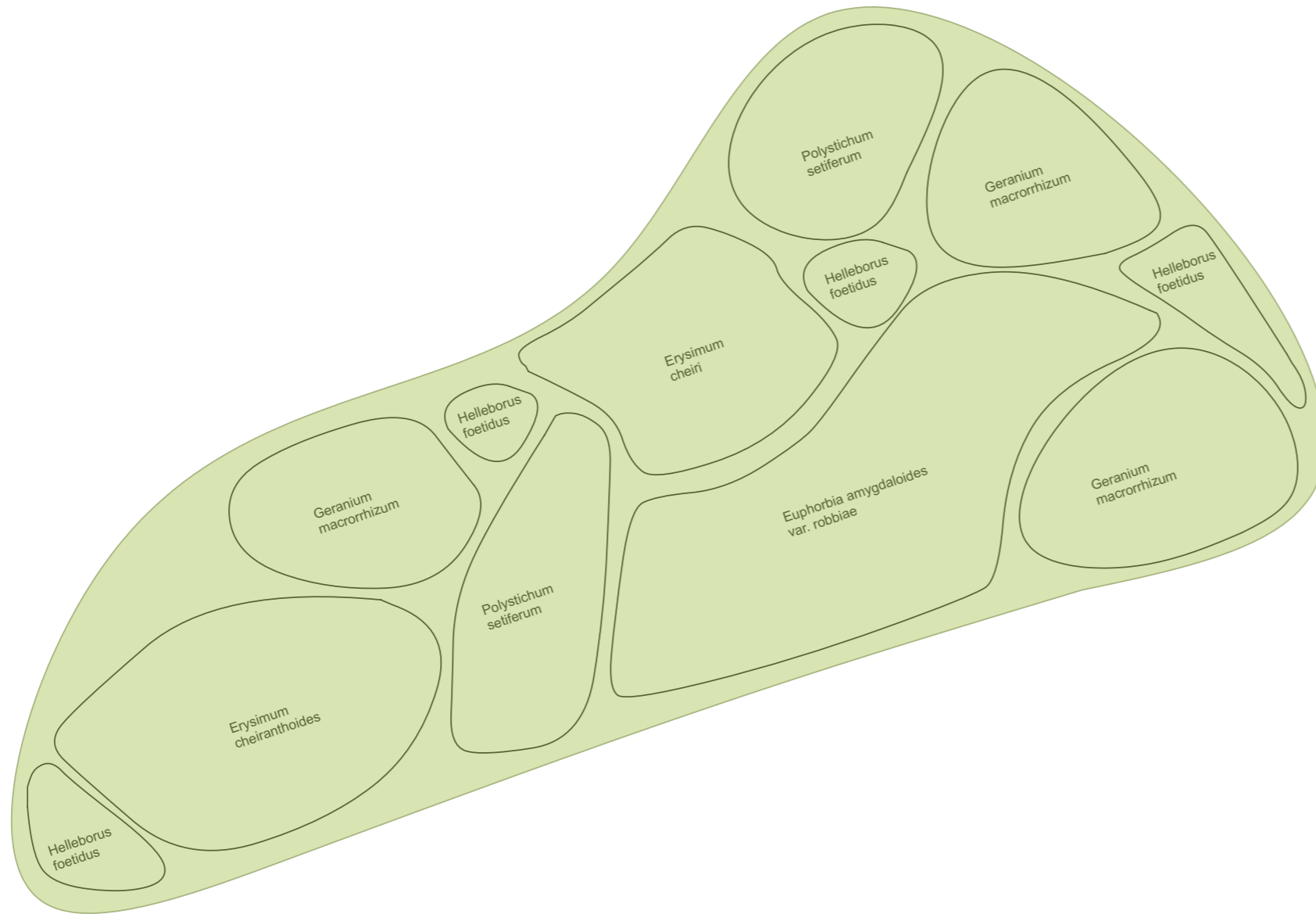
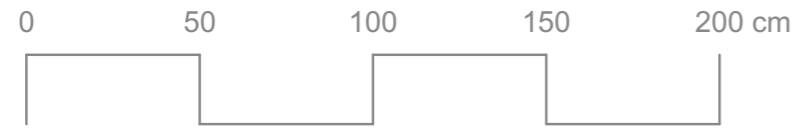
- Anemone blanda
- Cyclamen coum coum
- Cyclamen hederifolium
- Eranthis hyemalis

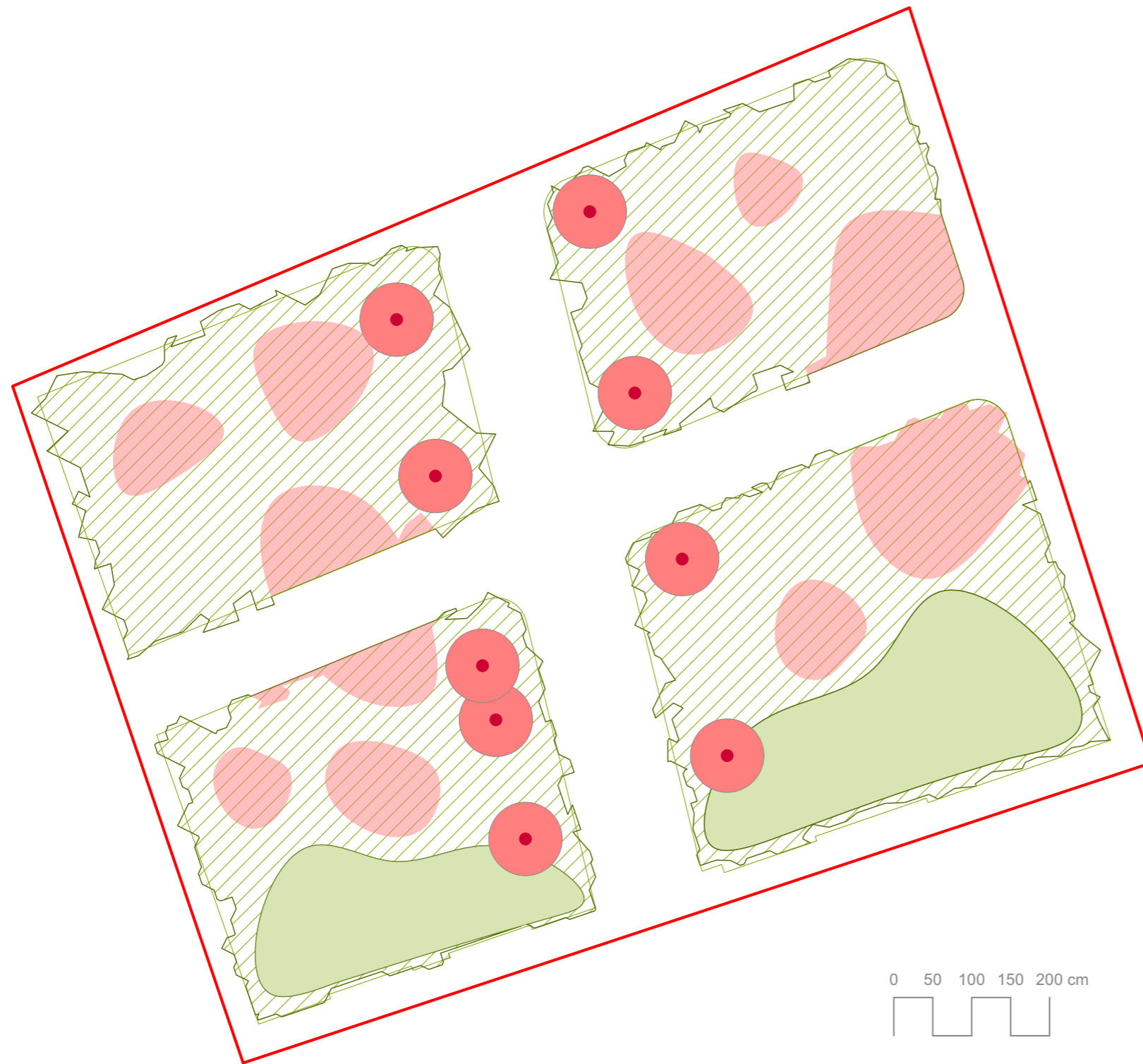




Borders met groepsbeplanting

- Erysimum cheiranthoides
- Erysimum cheiri
- Euphorbia amygdaloides
- Geranium macrorrhizum
- Helleborus foetidus
- Polystichum setiferum
- Salvia nemorosa JS 'A Little Bit' PBR
- Scabiosa columnare





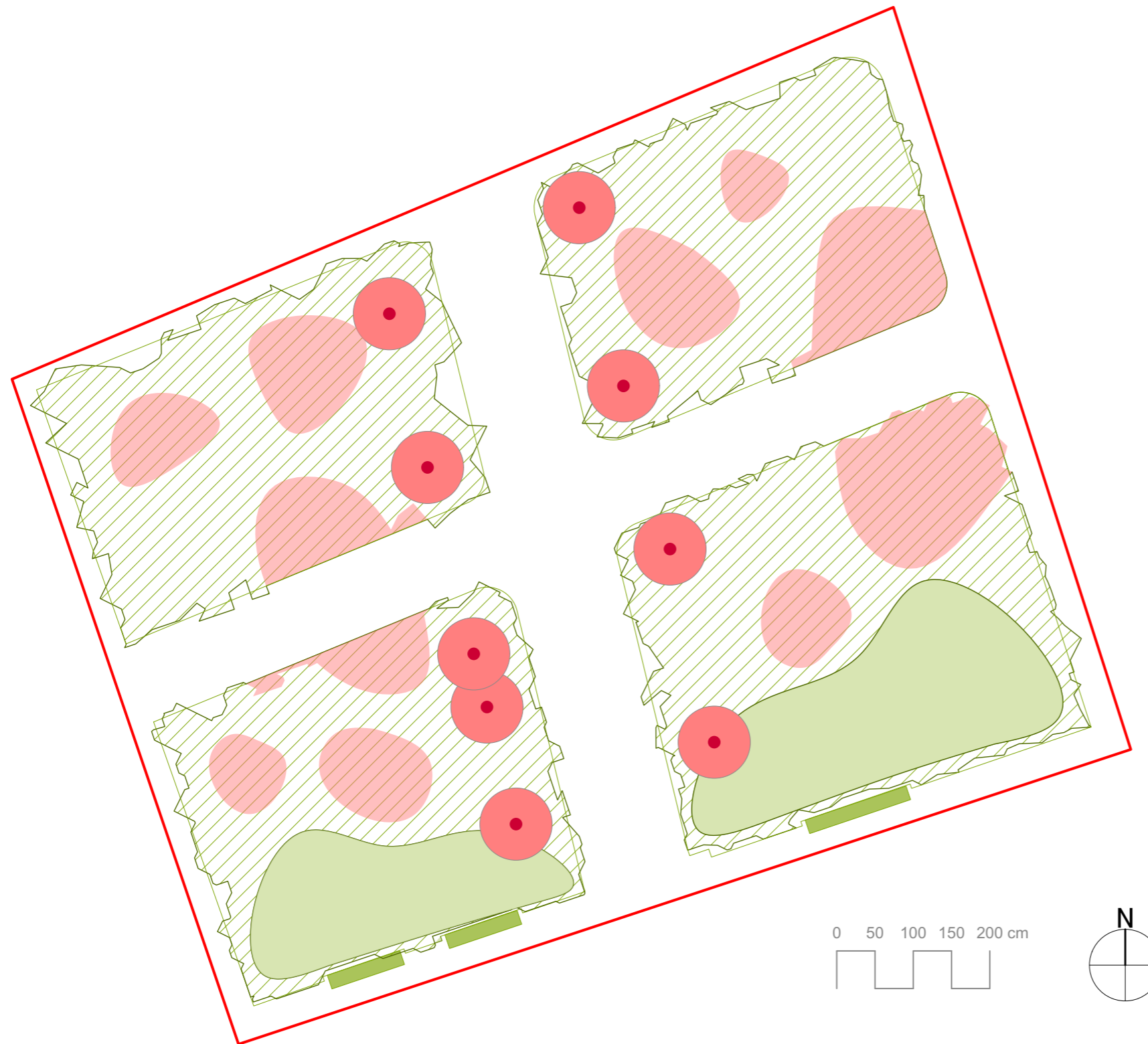
Open rozenheg

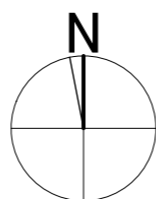
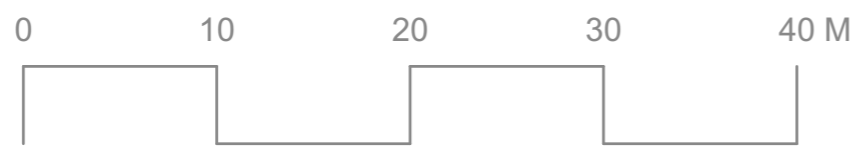
Rosa gallica



**Plantenbakken met
doorlevende beplanting**

Asplenium trichomanes
Campanula garganica
Corydalis solida
Cymbalaria muralis
Dicentra formosa





0 1 2 3 4 5 M

